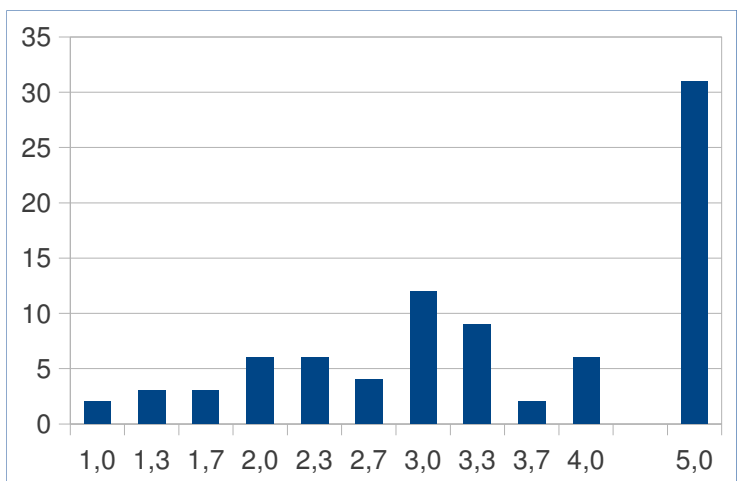


Tabelle1

09ea	1,3
10fe	2,0
1119	2,3
12f1	3,3
1499	5,0
175b	5,0
1df7	3,7
1ea5	5,0
1f07	5,0
200e	5,0
2453	5,0
2738	2,7
2873	1,7
2890	5,0
2d25	3,0
2eed	2,0
301d	3,0
3083	2,7
3150	3,0
32ac	4,0
356d	5,0
3797	5,0
37d1	3,3
3d11	1,7
4495	2,0
44fd	1,3
475d	5,0
47d4	4,0
4ee7	5,0
526b	5,0
5589	4,0
5597	5,0
5682	2,3
5992	3,3
59da	3,0
5b22	5,0
5d01	3,0
5d40	3,7
632f	1,0
658f	3,0
68b3	4,0
6fe9	2,0
7019	5,0
72a3	5,0
757c	2,3
7940	3,0



Durchfallquote: 36,9%

Tabelle1

7de5	5,0
7f57	3,0
8008	5,0
80f0	5,0
8727	4,0
8784	5,0
8ac2	3,0
91d8	5,0
924e	3,3
9300	5,0
9326	4,0
9519	2,0
96a0	2,3
a008	5,0
a428	2,3
a5e6	1,7
a8ab	3,3
af9d	5,0
b23c	5,0
b246	2,7
b292	2,0
b366	5,0
b9d2	3,3
c076	3,3
c2e0	5,0
c501	3,0
c8b3	2,3
c9dc	5,0
ca22	3,0
d20c	3,3
d630	3,0
d91d	5,0
d9d3	1,3
e605	2,7
ea25	5,0
edcb	5,0
f051	3,3
f9f9	1,0